



for 21 performers with melodicas and speaker playback

45'

Jordan Dykstra (2021)
Basilita Bonita Publishing (BMI)

Premiered as a synchronous back-to-back performance along the G train line in
Brooklyn, NY on October 15, 2021 at 6:00 PM and 7:00 PM.

This performance is made possible by the New York City Artist Corps.



GG (2021)

Jordan Dykstra

Instructions

- Each performer travels to their unique stop along the G train line in Brooklyn, NY, positioning themselves at the center of the platform. The list dictating which performer is stationed at which stop is listed on page 4.
- At 6:00pm begin playback on your speaker. When the playback has begun you will hear the sound of Beaker affectionally saying their tag-line “Mi Mi” and dictating the beginning of the piece.
- The 21-part piece is divided into three repeating sections:
 1. **GG Train Jam:** Section 1 is inspired by Charles Mingus’ piece “GG Train” and where the performer is instructed to embody the subway improviser, comfortably jamming along with the playback.
 2. **A Wave Field Through Time:** Section 2 is a game of inverted density and duration and where the performer is instructed to play their respective Station Tone (listed on the chart on page 4) in opposition to what they hear in the playback. For example, when a player hears short frequent tones they play long infrequent tones, when a player hears long infrequent tones they play short frequent tones, but when a player hears medium-length tones at a relatively medium frequency they will match the density and duration of the tone. See page 5 for list of playback density and durations in this section. In addition to the very short to very long tones, the playback in Section 2 also includes overlapping sine sweeps from G5 (784 Hz) down to G4 (392 Hz) and G4 up to G5. These additional tones are placed to help spatially and temporally orient the performer — and listener — over time. As expected, the two sine sweeps cross at the 22:30 mark.
 3. **A Sonorous Beat:** Section 3 is a tip-of-the-hat to the historical beats of Brooklyn and where the performer is instructed to play long G ♮ tones and, optionally, harmonize this tone with their Station Tone.
- Additional add-on options may also be included — see page 3 for a list of available additions.
- The 6-6:45pm audio file is programmed with an added 15’ of silence and will automatically begin again at 7:00pm, so please be ready to repeat the process.

Optional add-ons

- When you hear the announcement to “Stand clear of the closing doors” and tones associated with this action (D#5-B4) from the announcement speaker you may respond by playing the same tones on the melodica.
- When you see someone clearly miss their train “Press F to show your condolences:” play a single long F tone.
- At any time you may instead choose to play the live audio from a poker streamer on your phone via Twitch. If they are broadcasting I recommend the streamers AllInPav (<https://www.twitch.tv/allinpav/>), JNandezPoker (<https://www.twitch.tv/jnandezpoker>), or Egption (<https://www.twitch.tv/egption/>) but any live streamer from the Poker directory (<https://www.twitch.tv/directory/game/Poker>) is fine.
- If you see another musician performing on the platform you may give them \$5. I will reimburse you up to \$25.

Player Stations and Station Tone List

G Train Stop (North to South)	Station Tone	Performer
Court Sq	G ♮ 5	Morgan Evans-Weiler
21st St	F#5	Dave Scanlon
Greenpoint Av	F ♮ 5	Jesse Durost
Nassau Av	E ♮ 5	Galen Bremer
Metropolitan Av	D#5	Zachary Paul
Broadway	D ♮ 5	Bradford Willingham
Flushing Av	C#5	Jordan Dykstra
Myrtle-Willoughby Avs	C#5	Kwame Brandt-Pierce
Bedford-Nostrand Avs	C#5	Forrest Eimold
Classon Av	C#5	Jake Rudin
Clinton-Washington Avs	C#5	David Grubbs
Fulton St	C#5	Emilie Weibel
Hoyt-Schemerhorn Sts	D ♮ 5	Assaf Gidron
Bergen St	C#5	Hallie Blejewski
Carroll St	C ♮ 5	Teodora Stepančić
Smith-9th Sts	B ♮ 4	Griffin Brown
4 Ave-9th St	A#4	Derek Baron
7th Av	A ♮ 4	Ben Russell
15th St-Prospect Park	G#4	James Falzone
Fort Hamilton Pkwy	G ♮ 4	Ian Davis
Church Av	G ♮ 4	Douglas Farrand

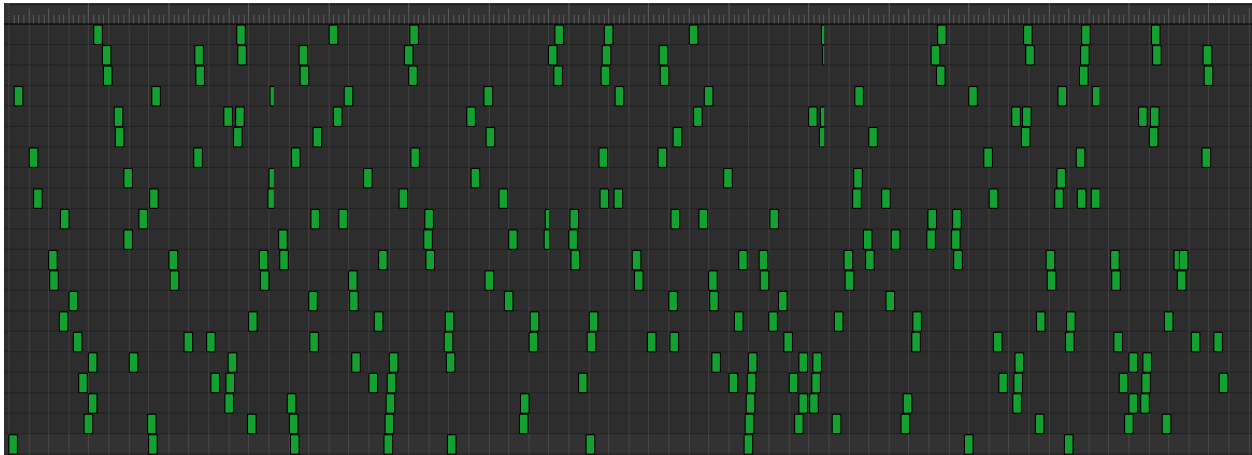


The Station Tones,
as well as the scale used in “A Wave Field Through Time,”
are inspired by the curvature of the G train line.

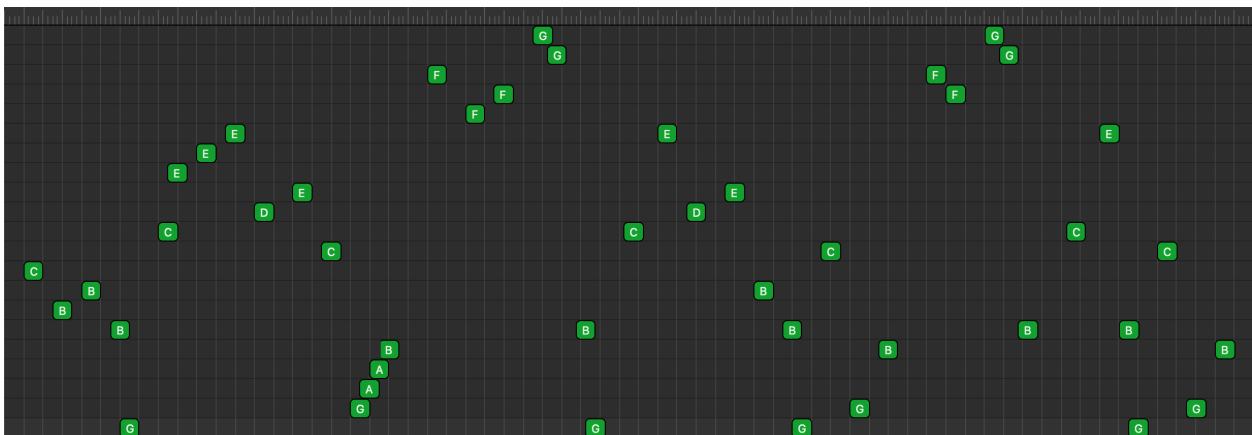
Section 2 (A Wave Field Through Time) — Playback Score

Part # (name)	Pitch Duration	Pitch Density (events per minute)
1 (very short)	0.125"	77
2 (short)	0.25"	55
3 (short-medium)	0.5"	39
4 (very medium)	1"	28
5 (medium-long)	2"	20
6 (long)	4"	14
7 (very long)	8"	10

Timeline of a Very Short Wave Field



Timeline of a Very Long Wave Field



Section 2 (A Wave Field Through Time) – Playback Pitch Height

Scale Degree — Pitch	Cent deviation from ET	Hertz Frequency
21 — G5	± 0	784.0
20 — G5 (lowered)	-32	769.6
19 — F#5	± 0	740.0
18 — F#5 (lowered)	-50	718.9
17 — F5	± 0	698.5
16 — E5	± 0	659.3
15 — E5 (lowered)	-50	640.5
14 — Eb5 (raised)	+31	633.5
13 — Eb5	± 0	622.3
12 — D5	± 0	587.3
11 — C#5	± 0	554.4
10 — C5	± 0	523.3
9 — C5 (lowered)	-41	511.1
8 — B4	± 0	494.0
7 — B4 (lowered)	-50	479.9
6 — Bb4 (raised)	+27	473.5
5 — Bb4	± 0	466.2
4 — A4	± 0	440.0
3 — Ab4	± 0	415.3
2 — G4 (raised)	+32	399.3
1 — G4	± 0	392.0

October 2021