

*There Are Whales
Swimming
Beneath
You*

JORDAN DYKSTRA

24:00

for vibraphone, flute, violin, viola, and double bass

2023

There Are Whales Swimming Beneath You

Jordan Dykstra (2023)

$\text{♩} = 24$ (10" per bar)

0:00

Flute

Vibraphone

Violin

Viola

Double Bass

For each staff: pick 2-4 tones from the pitch set and voice, at any time and in any octave, for around 10"

m no vib.

0:00 For each staff: pick 2-4 tones from the pitch set and voice, at any time and in any octave, for around 10"

m no vib.

0:00 For each staff: pick 2-4 tones from the pitch set and voice, at any time and in any octave, for around 10"

m no vib.

1:00 with vib.

Fl.

m

1:00 with fl. (mallet)

Vib.

m

1:00

Vln.

1:00

Vla.

1:00

Db.

2:00

Fl.

2:00

Vib.

2:00

Vln.

2:00

Vla.

2:00

Db.

Silence from 2:40 - 3:00

Silence from 2:40 - 3:00

Silence from 2:40 - 3:00

3:00

Fl.

3:00

Vib.

3:00

Vln.

3:00

Vla.

3:00

Db.

4:00

Fl.
Vib.
Vln.
Vla.
Db.

5:00

Fl.
Vib.
Vln. Silence from 5:40 - 6:00
Vla. Silence from 5:40 - 6:00
Db. Silence from 5:40 - 6:00

6:00

A

Fl. with vln.
Vib. (bowed)
Vln. As written (with flt.)
Vla. As written
Db. As written

7:00

Fl.
Vib.
Vln.
Vla.
Db.

(B)

8:00

Fl.

Vib.

8:00 For each staff: pick 2-4 tones from the pitch set and voice, at any time and in any octave, for around 10"

Vln.

8:00 For each staff: pick 2-4 tones from the pitch set and voice, at any time and in any octave, for around 10"

Vla.

8:00 For each staff: pick 2-4 tones from the pitch set and voice, at any time and in any octave, for around 10"

Db.

9:00 with vib.

Fl.

9:00 with fl. (mallet)

Vib.

9:00

Vln.

9:00

Vla.

9:00

Db.

10:00

Fl.

10:00

Vib.

10:00

Vln.

10:00

Vla.

10:00

Db.

Silence from 10:40 - 11:00

(C)

11:00

Fl.

11:00 (bowed)

Vib.

11:00 As written

Vln.

11:00 As written

Vla.

11:00 As written

Db.

D

12:00 with vib.

Fl.

12:00 with fl. (bowed)

Vib.

12:00 (+ means to waver slightly above the written pitch)

Vln.

12:00 (+ means to waver slightly above the written pitch)

Vla.

12:00 (+ means to waver slightly above the written pitch)

Db.

13:00

Fl.

13:00

Vib.

13:00 + gradually into sul pont

Vln.

13:00 gradually into sul pont

Vla.

13:00 + gradually into sul pont

Db.

14:00

Fl.

14:00

Vib.

14:00 + gradually into normal

Vln.

14:00 + gradually into normal

Vla.

14:00 + gradually into normal

Db.

15:00

Fl.

15:00

Vib.

15:00 +

Vln.

15:00 +

Vla.

15:00 +

Db.

E

16:00 with vib.

16:00 with fl. (mallet)

16:00 For each staff: pick 2-4 tones from the pitch set and voice, at any time and in any octave, for around 10"

Silence from 16:40 - 17:00

16:00 For each staff: pick 2-4 tones from the pitch set and voice, at any time and in any octave, for around 10"

Silence from 16:40 - 17:00

16:00 For each staff: pick 2-4 tones from the pitch set and voice, at any time and in any octave, for around 10"

Silence from 16:40 - 17:00

17:00

17:00

17:00

17:00

17:00

18:00

18:00

18:00

18:00

18:00

Silence from 18:40 - 19:00

Silence from 18:40 - 19:00

Silence from 18:40 - 19:00

19:00

19:00

19:00

19:00

19:00

Silence from 19:40 - 20:00

Silence from 19:40 - 20:00

Silence from 19:40 - 20:00

F 20:00

Fl. (bowed)

Vib.

Vln. As written 20:00

Vla. As written 20:00

Db. 20:00 As written

21:00

Fl.

Vib.

Vln. 21:00

Vla. 21:00

Db. 21:00

22:00

Fl.

Vib.

Vln. 22:00

Vla. 22:00

Db. 22:00

23:00

Fl.

Vib.

Vln. 23:00

Vla. 23:00

Db. 23:00

Flute

There Are Whales Swimming Beneath You

♩ = 24 (10" per bar)

Jordan Dykstra (2023)

0:00

A musical staff in 4/4 time with a treble clef. It contains six measures of whole rests, indicating a silent introduction.

1:00 with vib.

A musical staff in 4/4 time with a treble clef. It begins with a dynamic marking 'm' (mezzo) and a fermata over the first measure. The melody consists of quarter and eighth notes with slurs and accents.

2:00

A musical staff in 4/4 time with a treble clef. The melody continues with slurs and accents, featuring a fermata over the second measure.

3:00

A musical staff in 4/4 time with a treble clef. The melody continues with slurs and accents, featuring a fermata over the second measure.

4:00

A musical staff in 4/4 time with a treble clef. The melody continues with slurs and accents, featuring a fermata over the second measure.

5:00

A musical staff in 4/4 time with a treble clef. The melody continues with slurs and accents, ending with a fermata over the final measure.

Ⓐ 6:00 with vln.

A musical staff in 4/4 time with a treble clef. It begins with a circled 'A' and a dynamic marking 'with vln.'. The melody consists of quarter and eighth notes with slurs and accents.

7:00

(B) 8:00

9:00 with vib.

10:00

(C) 11:00

(D) 12:00 with vib.

13:00

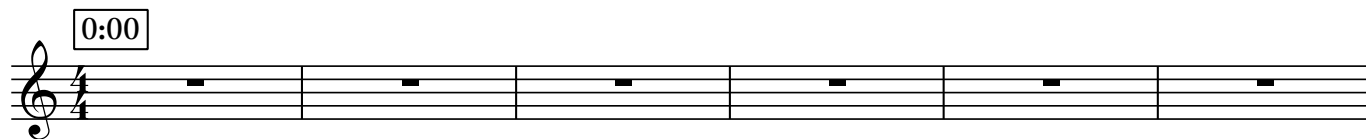
14:00

Vibraphone *There Are Whales Swimming Beneath You*

♩ = 24 (10" per bar)

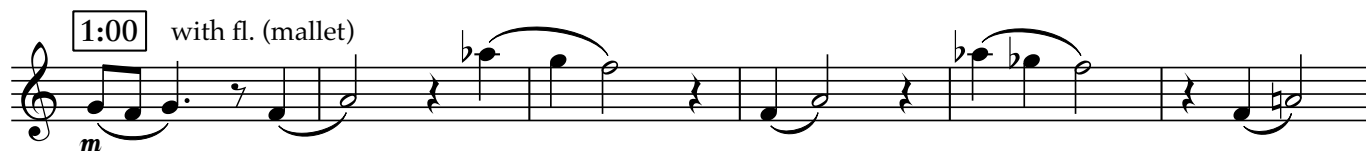
Jordan Dykstra (2023)

0:00



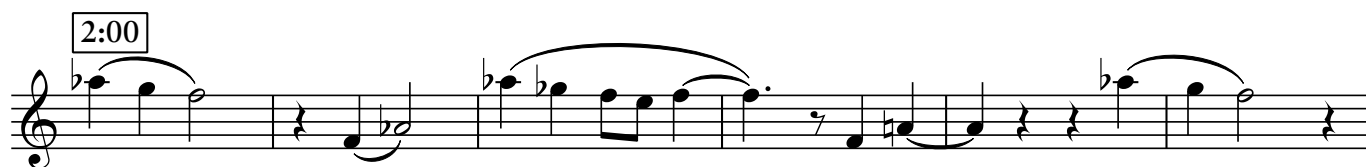
A musical staff in 4/4 time with a treble clef. It contains six measures of whole rests, indicating a silent introduction.

1:00 with fl. (mallet)



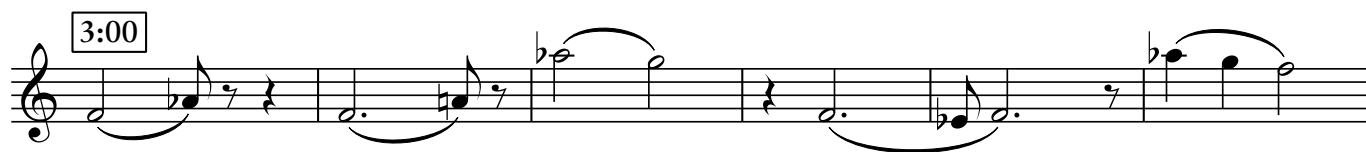
A musical staff in 4/4 time with a treble clef. It contains six measures of music. The first measure starts with a dynamic marking 'm' and a slur over a quarter note G4 and a quarter note A4. The second measure has a quarter rest followed by a quarter note Bb4. The third measure has a quarter note C5, a quarter note Bb4, and a quarter note A4. The fourth measure has a quarter note G4, a quarter note F4, and a quarter note E4. The fifth measure has a quarter note D4, a quarter note C4, and a quarter note B3. The sixth measure has a quarter note A3, a quarter note G3, and a quarter note F3.

2:00



A musical staff in 4/4 time with a treble clef. It contains six measures of music. The first measure has a quarter note Bb4, a quarter note C5, and a quarter note Bb4. The second measure has a quarter note A4, a quarter note G4, and a quarter note F4. The third measure has a quarter note E4, a quarter note D4, and a quarter note C4. The fourth measure has a quarter note B3, a quarter note A3, and a quarter note G3. The fifth measure has a quarter note F3, a quarter note E3, and a quarter note D3. The sixth measure has a quarter note C3, a quarter note B2, and a quarter note A2.

3:00



A musical staff in 4/4 time with a treble clef. It contains six measures of music. The first measure has a quarter note G4, a quarter note F4, and a quarter note E4. The second measure has a quarter note D4, a quarter note C4, and a quarter note B3. The third measure has a quarter note A3, a quarter note G3, and a quarter note F3. The fourth measure has a quarter note E3, a quarter note D3, and a quarter note C3. The fifth measure has a quarter note B2, a quarter note A2, and a quarter note G2. The sixth measure has a quarter note F2, a quarter note E2, and a quarter note D2.

4:00



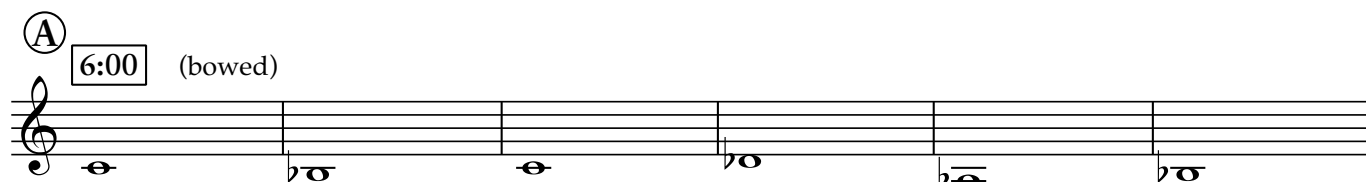
A musical staff in 4/4 time with a treble clef. It contains six measures of music. The first measure has a quarter note G4, a quarter note F4, and a quarter note E4. The second measure has a quarter note D4, a quarter note C4, and a quarter note B3. The third measure has a quarter note A3, a quarter note G3, and a quarter note F3. The fourth measure has a quarter note E3, a quarter note D3, and a quarter note C3. The fifth measure has a quarter note B2, a quarter note A2, and a quarter note G2. The sixth measure has a quarter note F2, a quarter note E2, and a quarter note D2.

5:00



A musical staff in 4/4 time with a treble clef. It contains six measures of music. The first measure has a quarter note G4, a quarter note F4, and a quarter note E4. The second measure has a quarter note D4, a quarter note C4, and a quarter note B3. The third measure has a quarter note A3, a quarter note G3, and a quarter note F3. The fourth measure has a quarter note E3, a quarter note D3, and a quarter note C3. The fifth measure has a quarter note B2, a quarter note A2, and a quarter note G2. The sixth measure has a quarter note F2, a quarter note E2, and a quarter note D2.

A 6:00 (bowed)



A musical staff in 4/4 time with a treble clef. It contains six measures of music. The first measure has a whole note G4. The second measure has a whole note F4. The third measure has a whole note E4. The fourth measure has a whole note D4. The fifth measure has a whole note C4. The sixth measure has a whole note B3.

Vibraphone

7:00

B
8:00

9:00 with fl. (mallet)

10:00

C
11:00 (bowed)

D
12:00 with fl. (bowed)

13:00

14:00

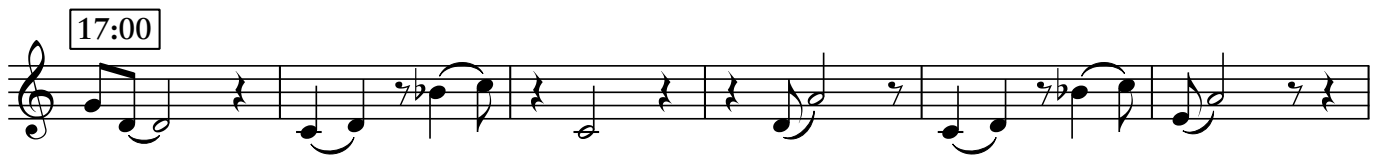
15:00



Ⓔ 16:00 with fl. (mallet)



17:00



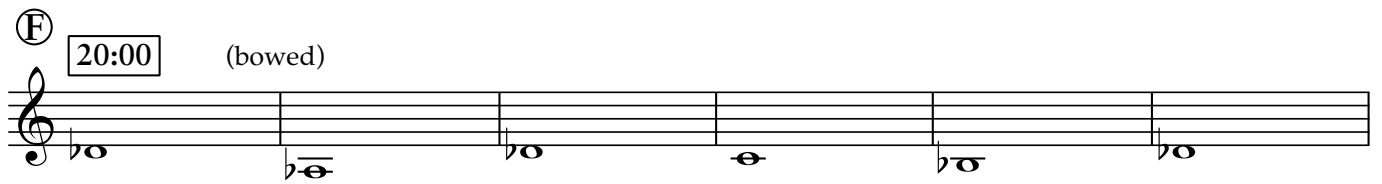
18:00



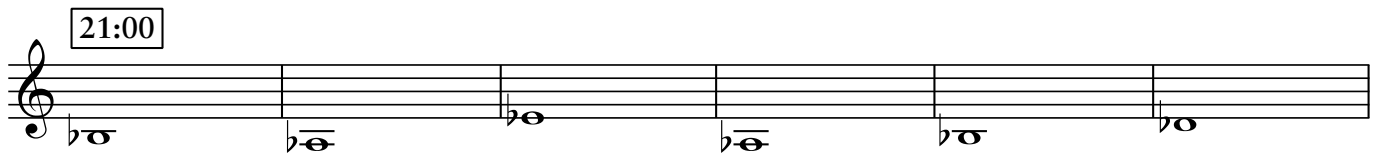
19:00



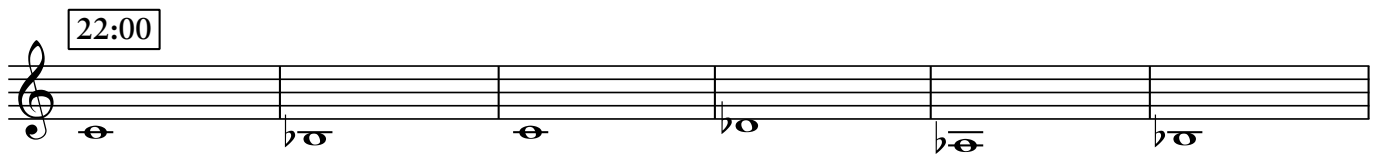
Ⓕ 20:00 (bowed)



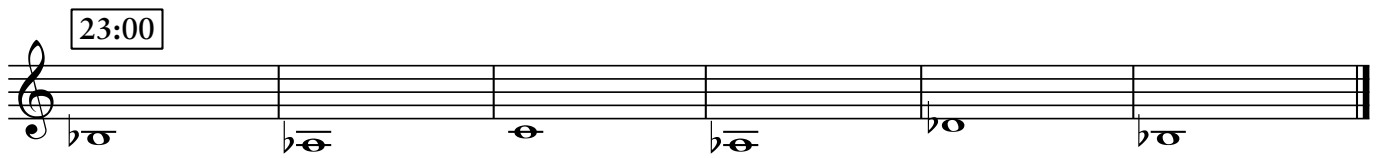
21:00



22:00



23:00



Violin

There Are Whales Swimming Beneath You

♩ = 24 (10" per bar)

Jordan Dykstra (2023)

0:00 For each staff: pick 2-4 tones from the pitch set and voice, at any time and in any octave, for around 10"

m no vib.

1:00

2:00

Silence from 2:40 - 3:00

3:00

4:00

5:00

Silence from 5:40 - 6:00

A

6:00 As written (with flt.)

7:00

B

8:00 For each staff: pick 2-4 tones from the pitch set and voice, at any time and in any octave, for around 10"

9:00

10:00

Silence from 10:40 - 11:00

C

11:00 As written

D

12:00 (+ means to waver slightly above the written pitch)

13:00 gradually into sul pont

14:00 gradually into normal

15:00


E For each staff: pick 2-4 tones from the pitch set and voice, at any time and in any octave, for around 10"

16:00

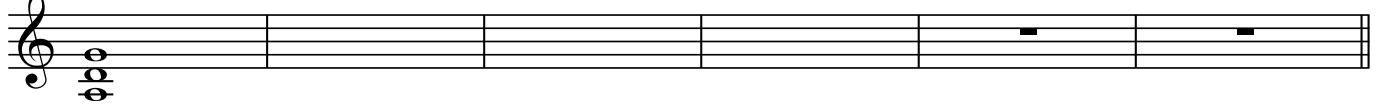
Silence from 16:40 - 17:00

17:00

18:00 Silence from 18:40 - 19:00

A musical staff in treble clef with a key signature of one flat (B-flat). It begins with a whole note chord consisting of G2, B-flat1, and D2. The staff is otherwise empty, indicating a period of silence from 18:40 to 19:00.

19:00 Silence from 19:40 - 20:00

A musical staff in treble clef with a key signature of one flat (B-flat). It begins with a whole note chord consisting of G2, B-flat1, and D2. The staff is otherwise empty, indicating a period of silence from 19:40 to 20:00.


F
20:00
As written

A musical staff in treble clef with a key signature of one flat (B-flat). It contains six measures of music. The first measure has a whole note chord (G2, B-flat1, D2) with a fermata. The second measure has a quarter rest. The third measure has a quarter note G2 with a fermata. The fourth measure has a quarter note B-flat1 with a fermata. The fifth measure has a quarter note D2 with a fermata. The sixth measure has a quarter note G2 with a fermata.

21:00

A musical staff in treble clef with a key signature of one flat (B-flat). It contains six measures of music. The first measure has a whole note chord (G2, B-flat1, D2) with a fermata. The second measure has a quarter rest. The third measure has a quarter note G2 with a fermata. The fourth measure has a quarter note B-flat1 with a fermata. The fifth measure has a quarter note D2 with a fermata. The sixth measure has a quarter note G2 with a fermata.

22:00

A musical staff in treble clef with a key signature of one flat (B-flat). It contains six measures of music. The first measure has a whole note chord (G2, B-flat1, D2) with a fermata. The second measure has a quarter rest. The third measure has a quarter note G2 with a fermata. The fourth measure has a quarter note B-flat1 with a fermata. The fifth measure has a quarter note D2 with a fermata. The sixth measure has a quarter note G2 with a fermata.

23:00

A musical staff in treble clef with a key signature of one flat (B-flat). It contains six measures of music. The first measure has a whole note chord (G2, B-flat1, D2) with a fermata. The second measure has a quarter rest. The third measure has a quarter note G2 with a fermata. The fourth measure has a quarter note B-flat1 with a fermata. The fifth measure has a quarter note D2 with a fermata. The sixth measure has a quarter note G2 with a fermata.

Viola

There Are Whales Swimming Beneath You

♩ = 24 (10" per bar)

Jordan Dykstra (2023)

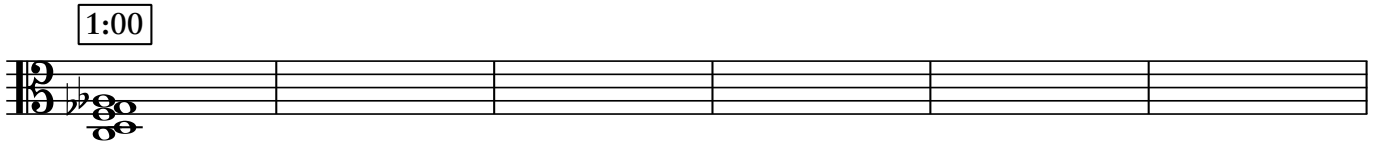
0:00 For each staff: pick 2-4 tones from the pitch set and voice, at any time and in any octave, for around 10"



0:00

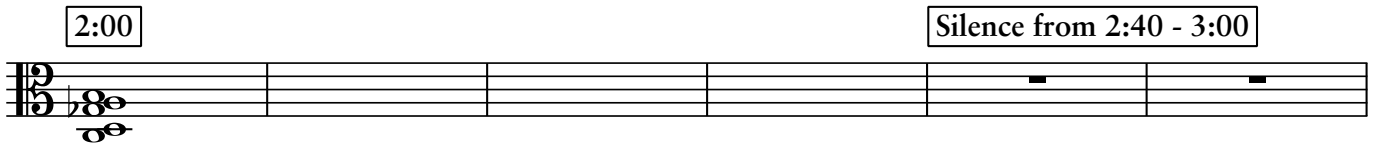
m no vib.

A musical staff with a treble clef, a key signature of one flat (B-flat), and a 4/4 time signature. The first measure contains a chord of G2, B-flat2, and D3. The rest of the staff is empty.



1:00

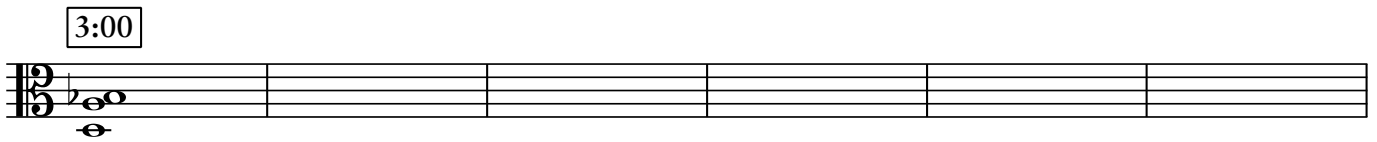
A musical staff with a treble clef, a key signature of one flat (B-flat), and a 4/4 time signature. The first measure contains a chord of G2, B-flat2, and D3. The rest of the staff is empty.



2:00

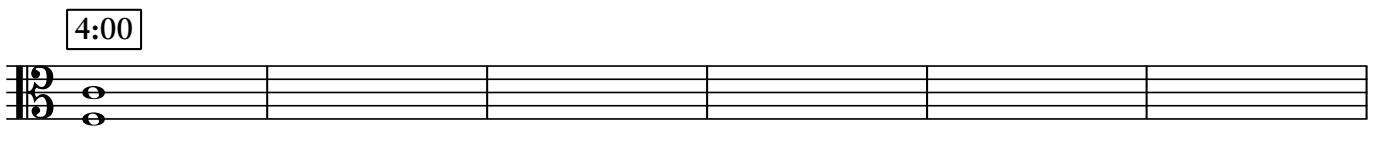
Silence from 2:40 - 3:00

A musical staff with a treble clef, a key signature of one flat (B-flat), and a 4/4 time signature. The first measure contains a chord of G2, B-flat2, and D3. The rest of the staff is empty. A box labeled "Silence from 2:40 - 3:00" is placed over the last two measures.



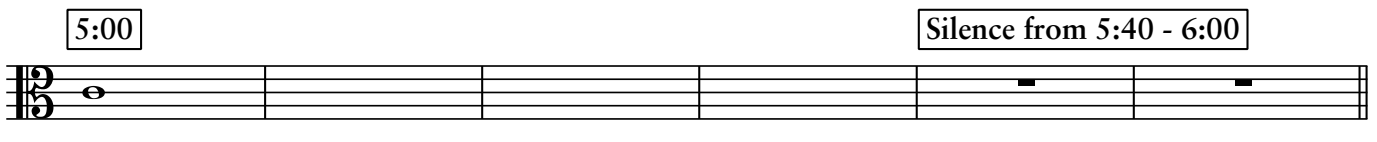
3:00

A musical staff with a treble clef, a key signature of one flat (B-flat), and a 4/4 time signature. The first measure contains a chord of G2, B-flat2, and D3. The rest of the staff is empty.



4:00

A musical staff with a treble clef, a key signature of one flat (B-flat), and a 4/4 time signature. The first measure contains a chord of G2, B-flat2, and D3. The rest of the staff is empty.




5:00

Silence from 5:40 - 6:00

A musical staff with a treble clef, a key signature of one flat (B-flat), and a 4/4 time signature. The first measure contains a chord of G2, B-flat2, and D3. The rest of the staff is empty. A box labeled "Silence from 5:40 - 6:00" is placed over the last two measures.

Ⓐ

6:00 As written



A musical staff with a treble clef, a key signature of one flat (B-flat), and a 4/4 time signature. The first measure contains a chord of G2, B-flat2, and D3. The second measure contains a chord of B-flat2, D3, and F3. The third measure contains a chord of B-flat2, D3, and F3. The fourth measure contains a chord of B-flat2, D3, and F3. The fifth measure contains a chord of B-flat2, D3, and F3. The sixth measure contains a chord of B-flat2, D3, and F3.

7:00

A musical staff in G-clef and 2/4 time. It contains six measures of music. The notes are: G2 (half note), A2 (quarter note with flat), G2 (half note), F2 (quarter note with flat), G2 (half note), and A2 (quarter note with flat). The notes are written below the staff.

B

8:00 For each staff: pick 2-4 tones from the pitch set and voice, at any time and in any octave, for around 10"

An empty musical staff in G-clef and 2/4 time, with a key signature of one flat (Bb).

9:00

An empty musical staff in G-clef and 2/4 time, with a key signature of one flat (Bb).

10:00

Silence from 10:40 - 11:00

A musical staff in G-clef and 2/4 time, with a key signature of one flat (Bb). It contains six measures. The first measure has a G2 note (half note). The second measure has an A2 note (quarter note with flat). The third measure has a G2 note (half note). The fourth measure has an F2 note (quarter note with flat). The fifth and sixth measures contain a horizontal line representing silence.

C

11:00 As written

A musical staff in G-clef and 2/4 time. It contains six measures of music. The notes are: G2 (half note), A2 (quarter note with flat), G2 (half note), F2 (quarter note with flat), G2 (half note), and A2 (quarter note with flat). The notes are written below the staff. A decrescendo hairpin is placed under the final note.

D

12:00 (+ means to waver slightly above the written pitch)

A musical staff in G-clef and 2/4 time. It contains six measures. The first measure is a whole rest. The second measure has a G2 note (half note). The third measure has an A2 note (quarter note with flat). The fourth measure has a G2 note (half note). The fifth measure has an F2 note (quarter note with flat). The sixth measure has a G2 note (half note). A slur is placed under the notes from the second to the sixth measure. There are '+' signs above the second and fifth measures.

13:00

gradually into sul pont

A musical staff in G-clef and 2/4 time. It contains six measures. The notes are: G2 (half note), A2 (quarter note with flat), G2 (half note), F2 (quarter note with flat), G2 (half note), and A2 (quarter note with flat). The notes are written below the staff. A slur is placed under the notes from the second to the sixth measure.

14:00

gradually into normal

A musical staff in G-clef and 2/4 time. It contains six measures. The notes are: G2 (half note), A2 (quarter note with flat), G2 (half note), F2 (quarter note with flat), G2 (half note), and A2 (quarter note with flat). The notes are written below the staff. A slur is placed under the notes from the second to the sixth measure. There are '+' signs above the second, fourth, and sixth measures.

15:00

Ⓔ

Silence from 16:40 - 17:00

16:00 For each staff: pick 2-4 tones from the pitch set and voice, at any time and in any octave, for around 10"

17:00

18:00

Silence from 18:40 - 19:00

19:00

Silence from 19:40 - 20:00

Ⓕ

20:00 As written

21:00

22:00

23:00

Double Bass

There Are Whales Swimming Beneath You

♩ = 24 (10" per bar)

Jordan Dykstra (2023)

0:00

For each staff: pick 2-4 tones from the pitch set and voice, at any time and in any octave, for around 10"

m no vib.

1:00

2:00

Silence from 2:40 - 3:00

3:00

4:00

5:00

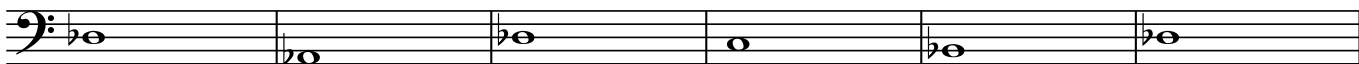
Silence from 5:40 - 6:00

Ⓐ

6:00

As written

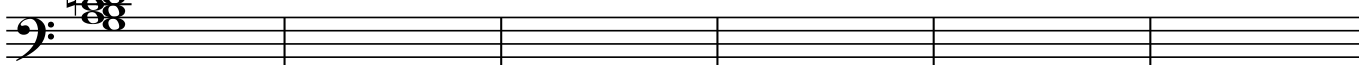
7:00



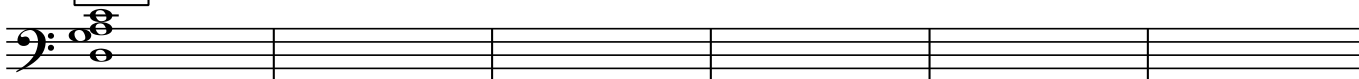
B

8:00

For each staff: pick 2-4 tones from the pitch set and voice, at any time and in any octave, for around 10"

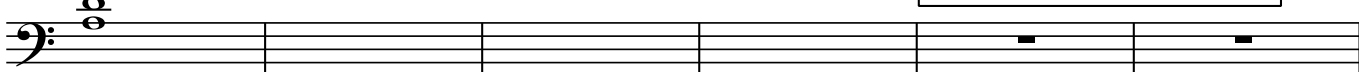


9:00



10:00

Silence from 10:40 - 11:00



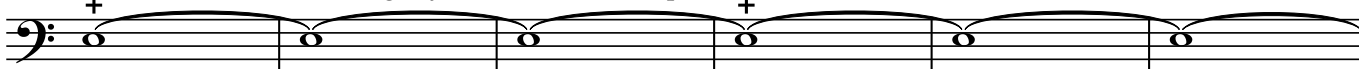
C

11:00 As written



D

12:00 (+ means to waver slightly above the written pitch)



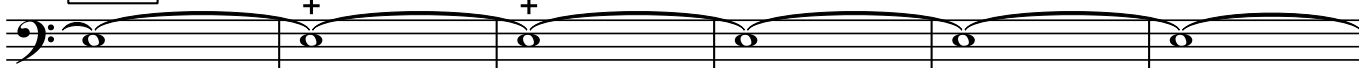
13:00

gradually into sul pont




14:00

gradually into normal



15:00




A musical staff in bass clef containing six eighth notes beamed together. A '+' sign is positioned above the second note.

Ⓔ

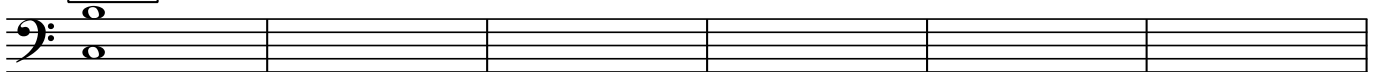
Silence from 16:40 - 17:00

16:00 For each staff: pick 2-4 tones from the pitch set and voice, at any time and in any octave, for around 10"



A musical staff in bass clef with a treble clef symbol above it. It shows two octaves of the pitch G (G2, G3, G4, G5).

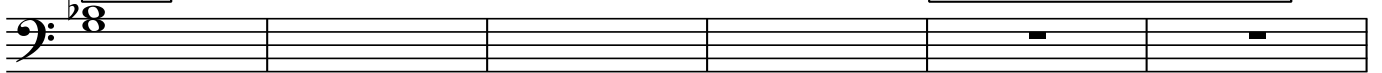
17:00



A musical staff in bass clef with a treble clef symbol above it. It shows two octaves of the pitch G (G2, G3, G4, G5).

18:00

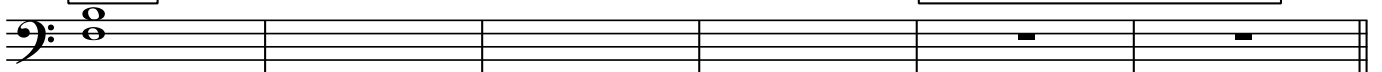
Silence from 18:40 - 19:00



A musical staff in bass clef with a treble clef symbol above it. It shows two octaves of the pitch G (G2, G3, G4, G5).

19:00

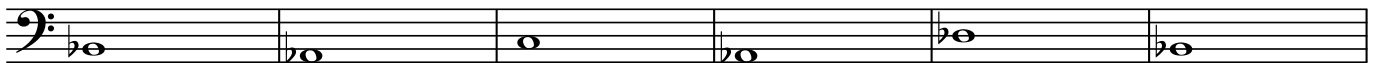
Silence from 19:40 - 20:00



A musical staff in bass clef with a treble clef symbol above it. It shows two octaves of the pitch G (G2, G3, G4, G5).

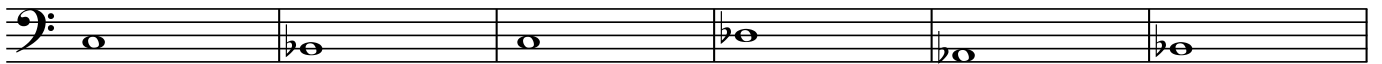
Ⓕ

20:00 As written



A musical staff in bass clef with a treble clef symbol above it. It shows two octaves of the pitch G (G2, G3, G4, G5).

21:00



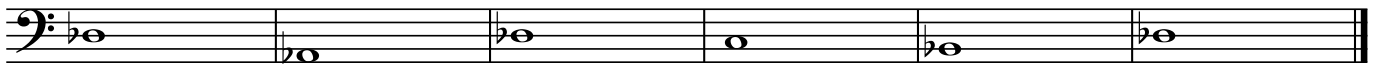
A musical staff in bass clef with a treble clef symbol above it. It shows two octaves of the pitch G (G2, G3, G4, G5).

22:00



A musical staff in bass clef with a treble clef symbol above it. It shows two octaves of the pitch G (G2, G3, G4, G5).

23:00



A musical staff in bass clef with a treble clef symbol above it. It shows two octaves of the pitch G (G2, G3, G4, G5).